

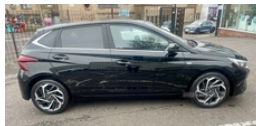


40 Bingham Street, Bangor, BT20 5DN
Mellons Hyundai: 028 9127 0444 | Derek: 078 6482 6766

Hyundai i20 1.0T GDi 48V MHD Premium 5dr DCT | Jul 2021

£15,995

FULL SERVICE HISTORY & REMAINDER OF MANUFACTURES WARRANTY



Miles:	8425
Fuel Type:	Petrol (Mild Hybrid)
Transmission:	Semi-Automatic
Colour:	Phantom
Engine Size:	998
Tax Band:	Petrol/Diesel (£190 p/a)
Body Style:	Hatchback
Insurance group:	14E
Reg:	FSZ4234

Technical Specs

DIMENSIONS	
Length:	4040mm
Width:	1775mm
Height:	1450mm
Seats:	5
Luggage Capacity (Seats Up):	352L
Gross Weight:	1650KG
Max. Loading Weight:	535KG

PERFORMANCE & ECONOMY

Fuel Consum. (Combined):	54.3MPG
Fuel Tank Capacity:	40L
Number Of Gears:	7 SPEED
Top Speed:	115MPH
Acceleration 0-100 km/h:	11.4s
Engine Power BHP:	99.2BHP

Derek 07864826766

Heated Front seats & steering wheel , apple Car play/android auto, sat nav, front & rear parking sensors, rear camera.

Manufactures warranty July 2026

Vehicle Features

2 rear), 2 tweeters, 3x3 point rear seatbelts, 6 speakers (2 front, 10.25" digital supervision cluster, 10.25" touchscreen centre console display satellite navigation including traffic messaging channel, 12v power outlet - front, 17" alloy wheels, 60/40 split folding rear seat, Adjustable head restraints, Adjustable intermittent front windscreen wipers with aero wiper blade, Anti-lock brake system, Apple car play/Android Auto, Auto dimming rear view mirror, Automatic defog system for front windscreen, Automatic headlights with dusk sensor, Automatic windscreen wipers with rain sensor, Autonomous emergency braking, Auxiliary input socket, Black mono interior trim, Blue interior mood lighting, Bluetooth connectivity with voice recognition, Body colour door mirrors with integrated indicators, Body coloured bumpers, Body colour exterior door handles, Childproof rear door locks, Chrome window surround, Climate control, Cloth upholstery, Cruise control + speed limiter, Curtain airbags, DAB Digital radio, Deadlocks, Drive mode selector, Driver/Front Passenger airbags, Driver/passenger sunvisors and illuminated vanity mirrors, Driver alert system, Drivers one touch up/down with anti-trap, eCall emergency call system, Electric adjustable heated door mirrors, Electric folding door mirrors, Electric front windows, Electric power steering, Electric rear windows, Emergency stop signalling system, ESP, Fasten seatbelt

reminder, Forward collision assist with pedestrian monitoring and cycle detection, Front armrest with storage box, Front fog lights, Front map reading lights, Front seatbelt pretensioners, Front side airbags, Gloss black radiator grille, Haptic steering, Heated front seats, Heated steering wheel, Height/reach adjustable steering column, Height adjustable driver's seat, Height adjustable front seatbelts, High beam assist, Hill start assist control (HAC), Immobiliser, Impact sensing auto door unlocking, Isofix rear child seat preparation, Lane departure warning system, Lane keep assist, Leather gear knob, Leather steering wheel, LED rear combination lights, Locking wheel nuts, Luggage compartment lighting, map care and live services, MFR - LED headlights, Michelin Tyre brand, Parcel shelf, Passenger airbag deactivate switch, Perimeter alarm, Privacy glass - Rear windows and tailgate, Rear parking sensor, Rear spoiler with integrated LED brake light, Rear Windscreen Wiper - Intermittent Function, Remote central locking, Satin chrome interior door handles, Shark fin antenna, Signature LED daytime running lights integrated into headlamp, Speed sensitive auto door locking, Static Cornering lights, Steering wheel mounted audio/telephone controls, Tinted windows, Trip computer, Tyre pressure monitoring system, Tyre repair kit, USB connection, Vehicle Stability Control (VSC)